

HUNTERS®

HERE TO GET *you* THERE

5 Chapel Row, Copt Hewick, Ripon, North Yorkshire, HG4 5BZ

Offers Over £235,000

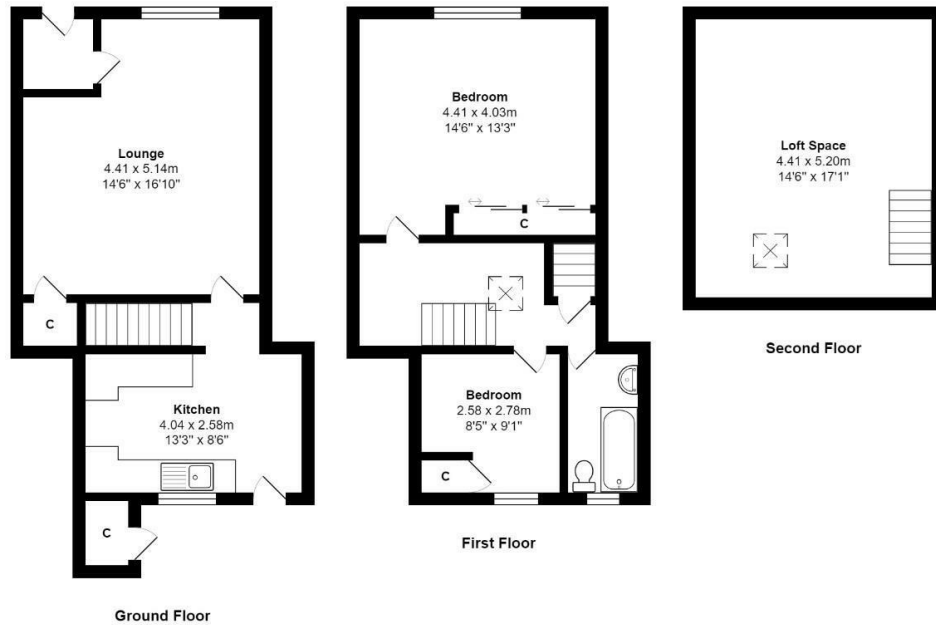
Property Images



Property Images




Floorplan



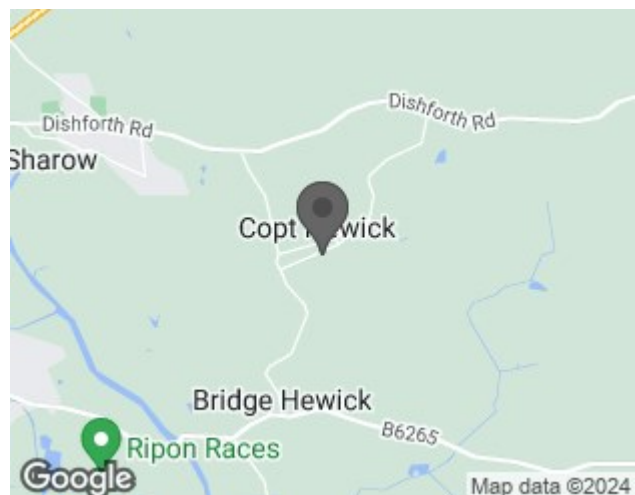
Total Area: 101.3 m² ... 1090 ft²

All measurements are approximate and for display purposes only

EPC

Energy Efficiency Rating		Current	Potential
Very energy efficient - lower running costs		<div>48</div>	<div>82</div>
<div>(92 plus) A</div>			
<div>(81-91) B</div>			
<div>(69-80) C</div>			
<div>(55-68) D</div>			
<div>(39-54) E</div>			
<div>(21-38) F</div>			
<div>(1-20) G</div>			
Not energy efficient - higher running costs			
England & Wales		EU Directive 2002/91/EC 	

Map



Details

Type: House - Terraced Beds: 2 Bathrooms: 1 Reception: 1

Tenure: Freehold

A lovely two bedroom period terrace cottage offering spacious accommodation throughout with lounge, kitchen, two bedrooms, bathroom, useful loft and enclosed patio area and countryside views.

Features

• SPACIOUS LOUNGE WITH LOG BURNER • FITTED BREAKFAST KITCHEN • ROLLING COUNTRYSIDE VIEWS • DOUBLE GLAZING THROUGHOUT • TWO SEPARATE BRICK BUILT STORAGE SHEDS • REAR SITTING AREA • LOVELY VILLAGE LOCATION CLOSE TO RIPON • TWO BEDROOMS AND USEFUL LOFT • SOLAR PANELS TO REAR • NEW CARPETS AND ELECTRIC HEATING THROUGHOUT